



St. Joseph Parish School

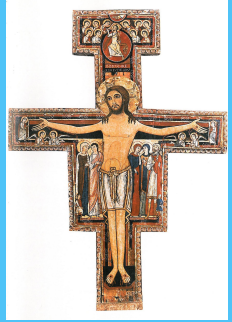
Reopening Plan, Summer 2020

Table of Contents

Intro & Prayer.....	Page 3
SJPS Reopening Commitments.....	Page 4
Learning Options.....	Page 5
Back to Distance Learning.....	Page 6
Student Cohorts.....	Page 7
Cleaning & Sanitizing.....	Page 8
Health & Hygiene.....	Page 9
Physical Distancing.....	Page 10
Face Coverings.....	Page 11
Symptoms of COVID-19.....	Page 12
Daily Health Screenings.....	Page 13
Communicating Any COVID-19 Cases in the School.....	Page 14
Decision Tree for Schools.....	Page 15
If a Positive COVID-19 Case Occurs.....	Page 16
Student Quarantine & Isolation Guidance.....	Page 17
Student Quarantine & Isolation Guidance Chart.....	Page 18

Sick Days.....	Page 19
Mass & Outreach.....	Page 20
Snack, Lunch, & Recess.....	Page 21
Visitors, Assemblies, & Field Trips.....	Page 22
Arrival.....	Page 23
Dismissal.....	Page 24
Staggered Start.....	Page 25
Scheduling.....	Page 26
Physical Education Class.....	Page 27
Early Childhood, K3-K5.....	Page 28
Bussing.....	Page 29
Extended Care.....	Page 30
Athletics & Extracurriculars.....	Page 31
Closing.....	Page 32
Resources.....	Page 33
UPDATES.....	Pages 34-37

Intro & Prayer



“Do not be anxious about anything, but in every situation, by prayer and petition, with thanksgiving, present your requests to God. And the peace of God, which transcends all understanding, will guard your hearts and your minds in Christ Jesus.” - [Philippians 4:6-7](#)

It is with much prayer and preparation that we present our reopening plan for St. Joseph Parish School, with the full support and approval of the Archdiocese of Milwaukee, the School Leadership Team, Parish Leadership, and the School Advisory Council. We promise to continue to fulfill our promise to develop the whole child - academically, spiritually, socially, emotionally, and physically, and to live our mission of, “Teaching, Learning, Leading, and Serving as the Hands of Christ.” With our patron St. Joseph to guide us, please keep our school, students, and families in your prayers, and know that you are in ours as well!

Amanda Matthews
School Principal

Brenda Cline
Parish Director

SJPS Reopening Commitments

Looking forward to the 2020-2021 school year, we are excited to be back in the building, but things will look a little different than in the past. Please take the time to read this document and positively prepare your children for the changes they will see at school this year. As a staff we are committed to the following:

- **Safety:** We are committed to making cleanliness a priority and providing a healthy learning environment for our students. Our reopening plans reflect the guidance from the Archdiocese of Milwaukee, Washington/Ozaukee Health Department, State of Wisconsin Department of Health Services, CDC, Wisconsin Department of Public Instruction, and worldwide best practices.
- **Mission:** A continued commitment to allow students to grow academically, spiritually, and emotionally thus living our mission: St. Joseph Parish School: Teaching, Learning, Leading, and Serving as the Hands of Christ.
- **Flexibility:** Our reopening plans allow for flexibility in order to accommodate the ever changing circumstances related to COVID-19. We ask all families and school staff to be understanding and supportive of the need for flexibility.

**Please note, the information and the procedures in this document are subject to change as more is learned about COVID-19.

Learning Options

It is our plan to return to school five days per week. Parents will have two options to choose from:

1. Face-to-Face Instruction which is our traditional in-school format **OR**
2. Virtual Instruction: This option delivers synchronous virtual instruction for students in grades 1-8, which means instruction will happen in real time for the teacher and student via an online platform. Grades K3-K5 will also have a virtual option specific to the classroom teacher and designed for an early childhood learner.

For more information about virtual instruction and to register for this option, please reference the attached google form here: <https://forms.gle/oXVTze8oH1ZFug2G6>

*The face-to-face option will be assumed for your child unless you complete the google form by August 15th, 2020.



Back to Distance Learning

- Due to the fluid nature of this pandemic and ever changing information, even if you do choose the face-to-face option, we may need to return to distance learning at some point throughout the school year.
- In the event that face-to-face learning is halted for one student, for a handful of students, for the entire grade, or for the entire student body, distance learning will take place.
- Distance Learning will continue to provide online instruction, assignments, and assessments utilizing a variety of platforms and software.
- Using Zoom or Google Meet, teachers in grades 1-8 will instruct students in real-time, as we did last year. Students may check out an iPad or Chromebook and will be provided with a schedule of times for each day that they will be required to log in for instruction.
- For Grades K3-K5, age appropriate virtual instruction will be provided as determined by the teacher.
- Distance Learning may be used for short or long term needs should schools be required to close.
- Parents will be notified in the event we need to transition back to distance learning.
- Learning may be halted for up to 48 hours to allow staff time to transition students back to distance learning.



Student Cohorts

In order to do our best to mitigate the risk of exposure to COVID-19, it is our plan to have students stay in their cohort throughout the school day, limiting exposure to other cohorts. For the 20-21 school year, according to our plan, a cohort is defined as each individual grade, with the exception of middle school which is a cohort unto itself due to unique scheduling.

- K3
- K4
- K5
- 1st Grade
- 2nd Grade
- 3rd Grade
- 4th Grade
- 5th Grade
- Middle School
 - 6th Grade
 - 7th Grade
 - 8th Grade

Cleaning & Sanitizing

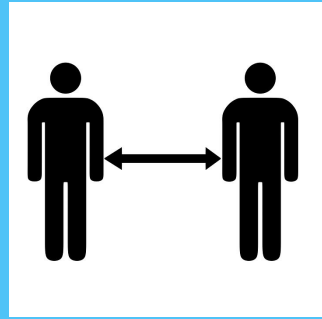
- Individual classrooms, office, Extended Care, and meeting rooms are now outfitted with Air Oasis Needlepoint Air Purifiers to effectively and continuously clean and ionize the air and all surfaces. <http://www.wac-hvac.com/dac/wp-content/uploads/CBJ-Air-Quality-Article-06-10-20.pdf>
- When possible, doors and windows will be opened to increase circulation.
- Increased daily and weekly cleaning protocols:
 - All surfaces will be disinfected daily. High traffic areas and restrooms will be chemically disinfected both during and outside of regular school hours.
- Multiple hand-sanitizing stations will be installed throughout the building.
- Each classroom will be provided ample supply of cleaning supplies.
- All cleaning and disinfecting supplies have been evaluated for effectiveness against COVID-19.



Health & Hygiene

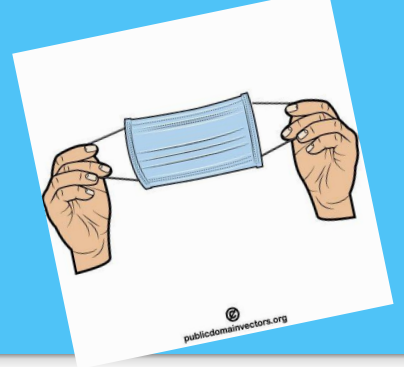
- Students will be given ample opportunities to wash their hands and use hand sanitizer throughout the day.
- Proper handwashing techniques will be taught and practiced.
- An isolation room is now located in the school office for students with COVID-19 symptoms.
 - Special protocols for the isolation room will be posted.
- Signs will be posted throughout the building regarding handwashing, social-distancing, and COVID-19 symptoms.
- Students will be taught to cover all coughs and sneezes using elbow (not hands).
- Face coverings will be utilized to reduce transmission.
- Minimize use of shared objects
 - Individual supplies
 - No sharing of personal items or food of any kind
 - Extra time to clean between the use of any kind of shared equipment when individual supplies aren't feasible

Physical Distancing



- All excess furniture has been removed to create open space
- Student desks will be spaced 3-6 feet apart to provide for social distancing
- Transparent desk shields available for students in grades 1-8
- Limited locker use and staggered locker assignments
- Students need to bring water bottles, bubblers will only be used as a filling station
- Scheduled transitions throughout the school day to decrease communal traffic
- Cohorts assigned specific entrance and exit locations, barring any emergencies
- Increasing lunch and recess slots to maintain cohorts
- Playground divided into zones and rotated daily among cohorts
- Adhesive directions placed on floors throughout the building to guide students in proper physical distancing protocols, i.e. 6 foot markers by bathroom

Face Coverings



In order to comply with Emergency Order #1 under the July 30, 2020 Executive Order #82, declaring a public health emergency to combat the uncontrolled spread of COVID-19 throughout the State of Wisconsin; face coverings will be required in the school building until September 28, 2020, unless a subsequent superseding emergency order occurs.

https://content.govdelivery.com/attachments/WIGOV/2020/07/30/file_attachments/1507337/EMO01-FaceCoverings.pdf

Mask guidelines:

- All *students* will be required to come to school with a **clean mask**. Face shields are not allowed for students.
- Each student must bring at least 2 clean masks per day and are required to bring them home each evening to be washed. Disposable masks are allowed but must be taken home to be disposed of.
- Mask designs must follow St. Joseph Parish School Code of Conduct - no inappropriate language or symbols
- Face shields may be worn by **educators only** when social distancing is maintained during whole group instruction in compliance with the order.
- Masks will be made available for students who forget them or may need a clean one throughout the day.
- Students in grades K4-8 will be required to wear face masks throughout the day in compliance with the order.
- K3 students will wear face masks when in public spaces, hallways, bathrooms, and when directed by their teacher.

What Families Need to Know - Cloth Face Coverings in School:

<https://drive.google.com/file/d/1Od5KYOatf5NAnEXboX7wm108Z8K6rBHv/view?usp=sharing>

Symptoms of COVID-19

People diagnosed with COVID-19 have exhibited a wide range of symptoms – from mild symptoms to severe illness. Symptoms may appear 2-14 days after exposure to the virus. People with these symptoms may have COVID-19:

- ☐ Fever or chills
- ☐ Cough
- ☐ Shortness of breath or difficulty breathing
- ☐ Fatigue
- ☐ Muscle or body aches
- ☐ Headache
- ☐ New loss of taste or smell
- ☐ Sore throat
- ☐ Congestion or runny nose
- ☐ Nausea or vomiting
- ☐ Diarrhea

***If you feel you have COVID-19 please contact your healthcare provider and stay home.**

Daily Health Screenings

When to Stay Home



All parents/guardians of students attending school and staff are asked to complete a daily health screening at home every morning before coming to school. This includes temperature screening and the following questions:

- Does your child have a temperature over 100.4 Fahrenheit within the last 48 hours?
- Has your child been in close contact with a confirmed case of COVID-19?
- Is your child experiencing a cough, shortness of breath, difficulty breathing, or sore throat within the last 48 hours?
- Does your child have a new loss of taste or smell?
- Does your child have muscle pain or chills?
- Does your child have any other illness symptoms including vomiting, diarrhea, continuous nasal drainage, or rash in the last 48 hours?

***If a student or staff member answers YES to any of these questions, they MUST STAY HOME!**

- If parents/guardians are in doubt, please keep the child home.
- Students cannot come to school if they receive any fever-reducing medication.
- If a student displays any of the listed symptoms while at school, the student's parent/guardian will be contacted to pick them up.
- If a staff member displays any of the listed symptoms while at school, they will be instructed to go home.
- Note: Students and staff need to be symptom-free prior to returning to school and fever free for 24 hours before returning to school.

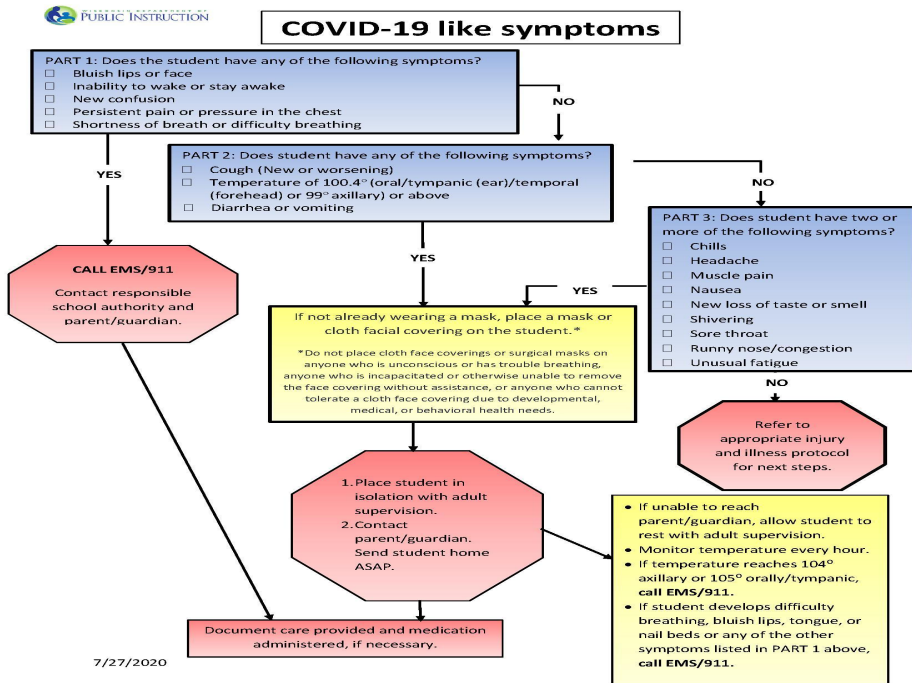
We truly appreciate your cooperation in this matter!

DECISION TREE FOR SCHOOLS

Communicating Any COVID-19 Cases in the School

- In working together to keep our school safe, we ask that parents notify the school immediately if their child or immediate family member tests positive for COVID-19.
- Additionally, the Washington/Ozaukee Health Department will notify the office of any positive COVID-19 cases within our school.
- Once a positive case is identified, all families will be notified via email (keeping all personal identification confidential according to HIPPA laws), that there is a positive case within the school.
- Additionally, staff will be required to immediately notify the school office if they test positive for COVID-19.

Decision Tree For Schools



- This decision tree will be used for staff in determining when to send children home from school.
- Parents should also use this chart, and their best judgment about their child's health, when determining if their child should stay home from school.
- If students exhibit any symptoms listed in part 1 or 2, or two or more of the symptoms listed in part 3, at school, they will be sent home. They are then required to have a negative COVID-19 test before returning to school.
- It is in the best interest of everyone if students exhibit these same symptoms at home, they do not come to school again until they have received a negative test.
- Any students exhibiting these symptoms during the school day must immediately be picked up.

If a Positive COVID-19 Case Occurs

In the event that a positive COVID-19 case occurs regarding a student or teacher, the following procedure will occur:

1. The whole school community will be notified via email.
2. The class with the teacher or student who tests positive will be notified via email.
3. The COVID-19 positive student/teacher, the entire class, and anyone the positive student/teacher has come in direct contact with will be quarantined and revert to distance learning for 14 days from the time of exposure in accordance with Washington/Ozaukee County Public Health Department recommendation.
4. COVID-19 positive students/teachers may return to school after the following:
 - a. At least 10 days have passed since symptoms first appeared, **AND**
 - b. At least 24 hours have passed since recovery. Recovery is defined by a resolution of fever without the use of fever-reducing medications **and** improvement of symptoms (cough, shortness of breath).
 - c. A signed letter from a physician approving return to work/school.

Student Quarantine & Isolation Guidance

Student Quarantine and Isolation Guidance Washington/Ozaukee Public Health Department

When a student tests positive for COVID-19 or comes into “close contact” with someone that tests positive for COVID-19 they will need to transition into virtual instruction. **Close contact** is defined as being within six feet of someone that tested positive for COVID-19 for at least fifteen cumulative minutes over a 24-hour period. In elementary schools, a close contact may include an entire classroom of students if the students are not able to maintain physical distance to one another.

The chart on the following page delineates how long students in such situations will need to participate in distance learning before being able to access in-person instruction again. Please stay in contact with your healthcare provider, school healthcare personnel, and local health department. They will guide you through the quarantine and isolation process and will determine the best date for returning to in-person instruction for your student.

Student Quarantine & Isolation Guidance Chart

IF	THEN	Calendar days Assigned for Virtual Instruction
Your child tests positive for COVID-19	Your child will be assigned virtual instruction for days school is in session over the course of at least 10 days. The last day prior to your child's return to in-person instruction, your child must be symptom-free.	At least 10 from date of test or onset date
Someone in your child's household tests positive for COVID-19	Your child will be assigned virtual instruction during the time any members of the household that test positive are isolating plus an additional fourteen calendar days after the infected member/s of the household are released from isolation. <i>This assumes the child continues to be in direct, close contact with the household member while they are infectious. If the COVID-19 positive household member is able to isolate separately from the child, the child would follow the virtual instruction guidelines for "close contacts." This also assumes your child does not develop symptoms during the quarantine period.</i>	At least 24 From date of household members onset date
Someone your child has been in "close contact" with tests positive for COVID-19	Your child will be assigned virtual instruction for days school is in session over the course of 14 days. If your child is symptom-free throughout this time your child can return to in-person instruction upon completion of their quarantine. <i>This assumes your child does not develop symptoms during the quarantine period.</i>	At least 14 From date of exposure

Sick Days



- Just as in the past, a sick day is a sick day. If your child is feeling ill, they should remain home or refrain from virtual learning in order to have time to rest and recover.
- Parents need to call the school office to report their child absent by 8 am - even if they are a virtual learner.
- Parents should clearly explain the symptoms their child is exhibiting when they call in sick.
- Face-to-face learners who are sick will not be able to utilize virtual learning on sick days because they will not have the technology or materials needed to engage in virtual learning.
- For face-to-face learners, missed work will be available for a parents to pick up by the end of the school day.
- For virtual learners, missed work will be sent out via email to the student and/or parent by the end of the school day.

Mass & Outreach



- Celebrating mass is one of the most important aspects of our Catholic Identity, and it is something we do really well at St. Joseph Parish School.
- We will create a schedule that allows our students to attend mass in small groups while physical distancing to begin with, while also utilizing technology to bring a celebration of spiritual communion to the classrooms. More information will follow.
- Likewise, outreach is a key part of our Catholic Social Teaching; and while we cannot go on service, mission, or immersion field trips at this time, we will work to create in-house service and outreach experiences for our students throughout the year.

Snack, Lunch, & Recess

Snack

- Morning and afternoon snack will be consumed in the classroom. Until further notice, there will be no birthday treats, favors, or sharing of snacks allowed.
- All students will properly wash their hands before eating their snack.

Lunch

- All students will properly wash their hands before lunch.
- Utilizing social distancing, each cohort will eat in their own area of Doherty Hall. We have added an additional lunch period to accommodate the number of students. Protocols for allergies will be followed.
- For students ordering from the lunch provider, lunch will be available.
- No sharing of any food or drink is allowed.
- Tables will be sanitized between lunch periods.

Recess

- There will be three lunch hour recess sessions to allow for smaller groups of students on the playground.
- Each class will have a designated area of the playground or “Zone” to use daily on a rotating basis. The playground structure will be used as one of the Zones.
- Playground equipment such as jump ropes and balls will be assigned to each cohort and sanitized after each recess.
- All students will use hand sanitizer before recess and wash hands after recess.
- Students will not be required to wear face masks during recess.

Visitors, Assemblies, & Field Trips

- Currently parents, visitors, and guests will not be allowed into the school building.
 - If a student needs to leave school early, parents should remain in their cars and call the school office once they arrive. Young children will be escorted out of the building.
 - When visitors are permitted into the building they must wear face coverings and adhere to all social distancing guidelines.
- No all-school in-person assemblies will be held at this time.
- Field trips outside of the building will not occur until Archdiocesan approval has been granted. At this time, field trip fees will be halted.

Arrival



- When students are dropped off in the morning, we ask that only the student(s) exit the vehicle. Parents may use the drop off circle under the canopy to pull up and allow their student to exit. Students will then join their class line on the playground and wait to enter the building. A mask must be worn at drop off.
- Until further notice, there will be no playground activity before school. At the time of arrival students will stand in their designated cohort location until 8:15.
- To minimize exposure to other cohorts, if possible, we ask that you try to drop your children off at 8:15 am. Supervision will begin at 8:00 am.
- In the event of rain, students will report directly to their classroom under the direction of the staff member on duty.



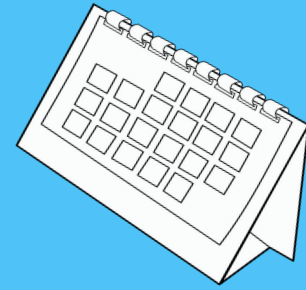
Dismissal

- All pickup will take place through the car pickup line only. Please remain in your vehicle unless you need to buckle in a small child.
- Students will exit the building with their class, led by the classroom teacher. Each class will line up at their designated spot on the coned-in area of the blacktop.
- All families will receive name signs to be posted in their windshield for pickup to allow the line to move more quickly.
- Students will have two dismissal options:
 - a. Student will be walked to the bus
 - b. Student will be dismissed by their teacher to their vehicle when it arrives

Staggered Start

- In order to allow all students and staff to better transition to the changes that will occur this year, we will begin with a staggered start of our students.
- K3: 5 students each day for the first three days of school. A sign-up genius will be sent to parents to choose your day.
- K4-8th-grade: Half the class will attend their first day of school on Wednesday, August 26th while the other half will attend on Thursday, August 27th. All students in grades K4-8th grade will be in class on Friday, August 28th. Parents will be notified whether their child/children will attend their first day of school on Wednesday or Thursday after the August 15th virtual instruction signup deadline.

Scheduling



- A daily schedule that allows for continuity of learning will be formatted.
- In most cases students will move with their teacher to their specialist class, (PE, Spanish, Art, Music). Social distancing will take place during specials when feasible. Cohorts will not mix for special classes at this time. Tables will be properly cleaned and sanitized between classes.
- Blocked scheduling for middle school students will be utilized to allow for fewer transitions between classes.
- Access to lockers will be limited and staggered.
- A movement schedule will be developed to limit hallway time to reduce non-cohort interaction.

Physical Education Class

- When possible, PE will occur outdoors. Students will not be required to wear facemasks while physically exerting themselves. Physical activities that align to our PE standards which allow for social distancing will take place for the foreseeable future.
- Locker rooms will no longer be used for changing before Physical Education Class.
- Middle School students will be allowed to wear SJPS spirit wear and comfortable athletic pants/shorts, in lieu of their school uniform, as long as the shorts/pants adhere to our out-of-uniform dress policy on PE days.
- Shared equipment will be limited. Any shared equipment will be sanitized between cohorts.



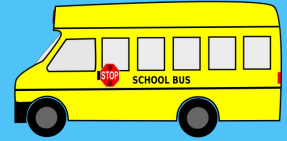
Early Childhood, K3-K5

*Due to the nature of Early Childhood Education, learning is facilitated through play, exploration, and socialization; therefore the same standard of classroom physical distancing that is in effect for grades 1-8 will not be enforced in the early childhood classrooms. However, proper and diligent hand-washing will occur throughout the day as well as educating students on proper protective behaviors.

Additionally:

- Masks will be worn in accordance with the state order for K4 & K5, K3 will wear masks in public spaces, bathrooms, hallways & when requested by their teacher.
- Consistent cleaning and sanitizing of shared objects, manipulatives, and toys.
- Virtual Learning will be available for families who chose this option, via multiple digital formats determined by the classroom teacher.
- Likewise, if the school moves to distance learning as explained earlier in this document, age appropriate virtual instruction will be provided as determined by the teacher.

Bussing



- St. Joseph Parish School will support the bussing and the safety protocols issued by the Grafton Public School District and Riteway Bus Company. For students riding the bus, the following bus protocols will take place.
 - Every individual on the bus must wear a face mask at all times.
 - Siblings will be required to sit together in the same row of the bus.
 - When possible, windows will be kept open to allow for circulation throughout the bus during trips.
 - Student are encouraged to use hand sanitizer or wash their hands prior to boarding the bus.
 - Buses will be loaded back to front and unloaded front to back whenever possible.
 - Riteway will clean and disinfect frequently touched surfaces on buses at least daily or between use as much as possible.

Extended Care

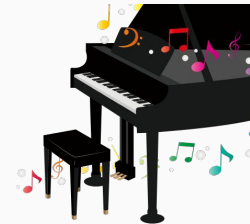
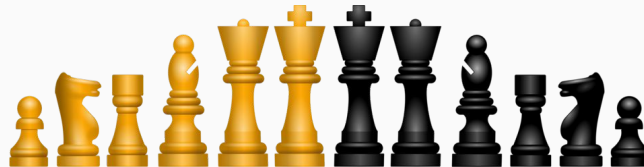
We will continue offering before and after school Extended Care from 6:30-8:15 am and 3:15-6:00 pm. Please understand that this service is a separate option to the regular school day and will not follow all of the same protocols as a classroom experience. The protocols we are following are in line with the local daycares. The following health and safety protocol will be implemented:

- The addition of Air Oasis Needlepoint Air Purifiers to effectively and continuously clean and ionize the air and all surfaces.
- Students will wash hands and/or sanitize upon entering Extended Care and before eating.
- Practice physical distancing and cohorting when feasible.
- Staff will wear masks, students will follow the same rules for masks as they do during the school day.
- Each room in Extended Care will be sanitized every night and increase cleaning protocols when students are present.
- Extended Care will be open on scheduled non-school days, but will have a limited capacity and will be based on a first come, first served basis.
- Parents will not be allowed to enter the building upon drop off or pickup.
 - **Arrival:** Please ring the doorbell and wait outside for the staff member to answer and welcome your child.
 - **Departure:** Please ring the doorbell and wait outside for the staff member to answer and prepare your child to leave.
 - The staff member will sign your child in and out for you.

Athletics & Extra-Curriculars



- The Archdiocese of Milwaukee has made the difficult decision to cancel athletics for the fall season. In October they will make the decision about winter sports and later in the year make the decision regarding spring sports. If you have questions regarding athletics please contact Brian Morgan at brian.morgan@marquette.edu.
- We are currently waiting on guidance from the Archdiocese regarding extracurricular activities.



Closing

We recognize there is risk in everything we do, and that even with the measures our school is implementing, there is no guarantee that we will not experience a shutdown at some time during the 2020-21 school year. Please also know, that although we will put in place the practices listed in this document, it does not guarantee we are a COVID-19 free zone. Students and faculty assume the risk of contacting COVID-19 by returning to school/work. We respect the decisions of our families whether they choose face-to-face or virtual learning. Please be assured, we at St. Joseph Parish School will work diligently to make the 2020-2021 school year a success for all of our students. Thank you for partnering with us in your child's education!

Resources

American Academy of Pediatrics

<https://services.aap.org/en/pages/2019-novel-coronavirus-covid-19-infections/clinical-guidance/covid-19-planning-considerations-return-to-in-person-education-in-schools/>

CDC (Centers for Disease Control & Prevention)

<https://www.cdc.gov/coronavirus/2019-ncov/community/schools-childcare/schools.html>

Leading with Hope

<https://www.gbdioc.org/docman/resource-and-support/communications/covid19/re-engagement/769-leading-with-hope/file>

State of Wisconsin Department of Health Services, Division of Public Health - Reopening School Building Risk Assessment Tool

https://dpi.wi.gov/sites/default/files/imce/sspw/pdf/Reopening_School_Building_Risk_Assessment_Tool.pdf

Washington & Ozaukee Health Department & Blueprint for Reopening <http://www.washozwi.gov/>

<http://www.washozwi.gov/Services/Communicable-Disease/Blueprint-FAQ>

Wisconsin Department of Health Services <https://www.dhs.wisconsin.gov/covid-19/schools.htm>

Wisconsin Department of Public Instruction

<https://dpi.wi.gov/wilibrariesforeveryone/dpi-guidance-schools-provided-education-forward>

UPDATES

8/24/2020

Per Washington/Ozaukee Health Department to following updates have been made to the mask policy:

- Cotton or disposable masks only.
- No gaiters, bandannas, or masks with valves allowed.
- Throughout the day, mask breaks are allowed when students are outside and at least 6 feet away from other individuals, or inside sitting at their desks behind a shield and socially distanced from others.
- Students in K4-8th-grade must wear masks whenever they come within 6 feet of another individual. This includes recess, outside classes, and during Physical Education Class.
- When napping, students in K3 & K4 will not wear a mask.
- Students can take off masks when eating or drinking.

UPDATES

8/24/2020

Collaboration/Group Work

- Collaborative/Group work will take place throughout the school day in individual classrooms in order to maintain a collaborative learning environment.
- Lab experiences will occur within the classroom.
- Records of seating charts and student grouping will be maintained for contact tracing purposes.
- Technology will be used for collaboration when possible.
- Physical distancing and the use of desk shields as barriers between small groups
- Limited shared materials. Any shared materials will be sanitized between student use
- Students will use hand sanitizer or wash their hands before and after use of shared materials and manipulatives.

UPDATES

8/24/2020

New guidance from Wisconsin Department of Health Services regarding when to stay home:

Individual is NOT a known close contact to a COVID-19 case:

Individual Symptomatic		No Symptoms
Not tested for COVID19	<ul style="list-style-type: none">• The individual must remain home for at least 10 days since the first symptoms began AND be fever free without the use of fever-reducing medications for 24 hours AND with improvement of symptoms.• Siblings and household members should follow the close contact chart below for exclusion.• If diagnosed with another condition that explains the symptoms, such as influenza or strep throat, no isolation or quarantine of close contacts is necessary. Follow guidance from the health care provider and exclusion period of the diagnosed disease as listed on the Wisconsin Childhood Communicable Diseases Wall Chart	May attend school
Tested and negative for COVID-19	<ul style="list-style-type: none">• The individual must be fever free for 24 hours without the use of fever-reducing medications• If diagnosed with another condition, the individual must complete the exclusion period for the diagnosed disease as listed on the Wisconsin Childhood Communicable Diseases Wall Chart. An alternative diagnosis is not required.	May attend school
Tested and positive for COVID-19	<ul style="list-style-type: none">• The individual must isolate at home for at least 10 days since the first symptoms began AND be fever free without the use of fever-reducing medications for 24 hours AND with improvement in symptoms. Repeat testing is NOT recommended for making decisions about when people can return to work or school.• Siblings, household members, and other close contacts should follow the close contact chart below.	<ul style="list-style-type: none">• Must isolate at home for 10 days after the day the sample was collected.• Siblings, household members, and other close contacts should follow the close contact chart below.

UPDATES

8/24/2020

New guidance from Wisconsin Department of Health Services regarding when to stay home:

Individual is a known close contact to a COVID-19 case:

Individual Symptomatic

Not tested for COVID19

- The individual must quarantine for 14 days after the last contact with the COVID-19 positive person. If the exposure is to a household member and the case cannot properly isolate away from others at home, the last date of contact may be the last day of isolation for the case.
- The individual must also remain home for at least 10 days since the first symptoms began AND be fever free without the use of fever-reducing medications for 24 hours AND with improvement of symptoms.
- **The criteria in both of the above bullets must be met before returning to school.**
- Siblings, household members, and other close contacts should also follow this chart to determine quarantine length.

Tested and negative for COVID-19

- The individual must quarantine for 14 days after the last contact with the COVID-19 positive person. If the exposure is to a household member and the case cannot properly isolate away from others at home, the last date of contact may be the last day of isolation for the case.
- The individual must also be fever free for 24 hours without the use of fever-reducing medications AND if diagnosed with another condition, they must complete the exclusion period for the diagnosed disease as listed on the [Wisconsin Childhood Communicable Diseases Wall Chart](#). An alternative diagnosis is not required.
- **The criteria in both of the above bullets must be met before returning school.**

Tested and positive for COVID-19

- The individual must isolate at home for at least 10 days since the first symptoms began AND be fever free without the use of fever-reducing medications for 24 hours AND with improvement in symptoms. Repeat testing is NOT recommended for making decisions about when people can return to work or school.
- Siblings, household members, and other close contacts should also follow this chart to determine quarantine length.

No Symptoms

Must quarantine for 14 days from the date of last exposure before returning to school or daycare. If the exposure is to a household member and the case cannot properly isolate away from others at home, the last date of contact may be the last day of isolation for the case.

Must quarantine for 14 days from the date of last exposure before returning to school or daycare. If the exposure is to a household member and the case cannot properly isolate away from others at home, the last date of contact may be the last day of isolation for the case.

Must isolate at home for 10 days from the day the sample was collected. • Siblings and household members and other close contacts should also follow this chart to determine quarantine length.